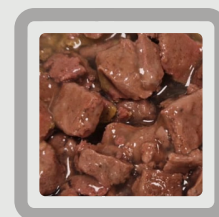


INDICATIONS

- ▶ Acute and chronic gastrointestinal disease with associated diarrhoea, vomiting and/or flatulence
- ▶ Malabsorption, maldigestion
- ▶ Exocrine pancreatic insufficiency
- ▶ Small intestinal bacterial overgrowth
- ▶ Colitis
- ▶ Convalescence



12x85 g



SPECIFIC™ FIW-P DIGESTIVE SUPPORT

PROPERTIES AND RATIONALE FOR THE COMPOSITION



Highly digestible ingredients compensate for decreased intestinal enzymatic activity and ensure an optimal uptake of nutrients. This makes the diet optimal for patients with gastrointestinal conditions such as acute and chronic diarrhoea, vomiting and/or flatulence.



The **high content of minerals and fat soluble vitamins** compensate for compromised absorption in the patient's gastrointestinal system. The **increased level of electrolytes** compensate for increased losses during diarrhoea and vomiting.



Contains **B-1,3/1,6-glucans from yeast**, which can bind to receptors of white blood cells, thereby alerting the immune system and supporting the immune response. The diet contains **mannan-oligo-saccharides (MOS)**. MOS can bind pathogenic bacteria, thereby preventing them from binding to the intestinal wall, and also supports the local intestinal immunity.



Psyllium husk is a gel-forming soluble fibre, which is known for its beneficial effect on the regulation of the gastrointestinal tract activity and protection of the intestinal mucosa. Fermentable fibres (FOS) promote the growth of beneficial colonic bacteria.



With postbiotic yeast fermentation product and natural plant-based mixture for **support of healthy gut and microbiome**.